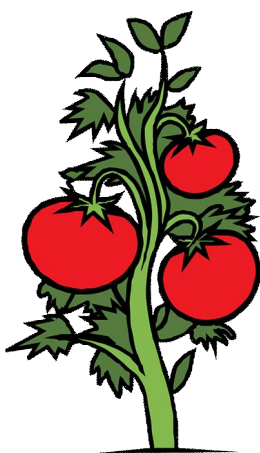


August
2018



Inside this issue:

Important Dates to Remember	1
Mason Bees	2
Sentry Article: Stow Garden 2019 Uncertain	3
Stow Community Garden Rules	4
Young Gardeners	5
Donation of Produce	5



Manure Spreader

Stow Community Garden Newsletter

Important Upcoming Dates to Remember

August 14th ~ September 11th ~ October 9th

Tuesdays 10:00 am

Garden Planning Meetings,
Stow City Hall



Monday, August 20 at 6:00 PM.

Oak Tree Shelter Silver Springs Park

Covered Dish Event with Portage County Master Gardeners
(See additional information below)

Friday, September 28

End of Community Garden Season

Last Day to Harvest ALL Produce

and to remove ALL materials from the garden.



Event with Portage County Master Gardeners

The Portage County Master Gardener Volunteers will be our guests for
a covered dish meeting on **Monday August, 20 at 6:00pm.**

Silver Springs Park at Oak Tree Shelter (the shelter near playground toward back of park.) Only registered gardeners are invited (please, no friends or unregistered family) and are requested to bring a covered dish to share to feed 6-8. Plates, napkins, utensils, cups & drinks (lemonade & water) will be provided. The Portage County Master Gardeners will be given a tour of our gardens.

Please respond to Karen DePalo (depalok@aol.com) if you plan to attend.

Mason Bee House and Pollinator Garden UPDATE

On a recent stroll around the garden I took several photos of our pollinator gardens.

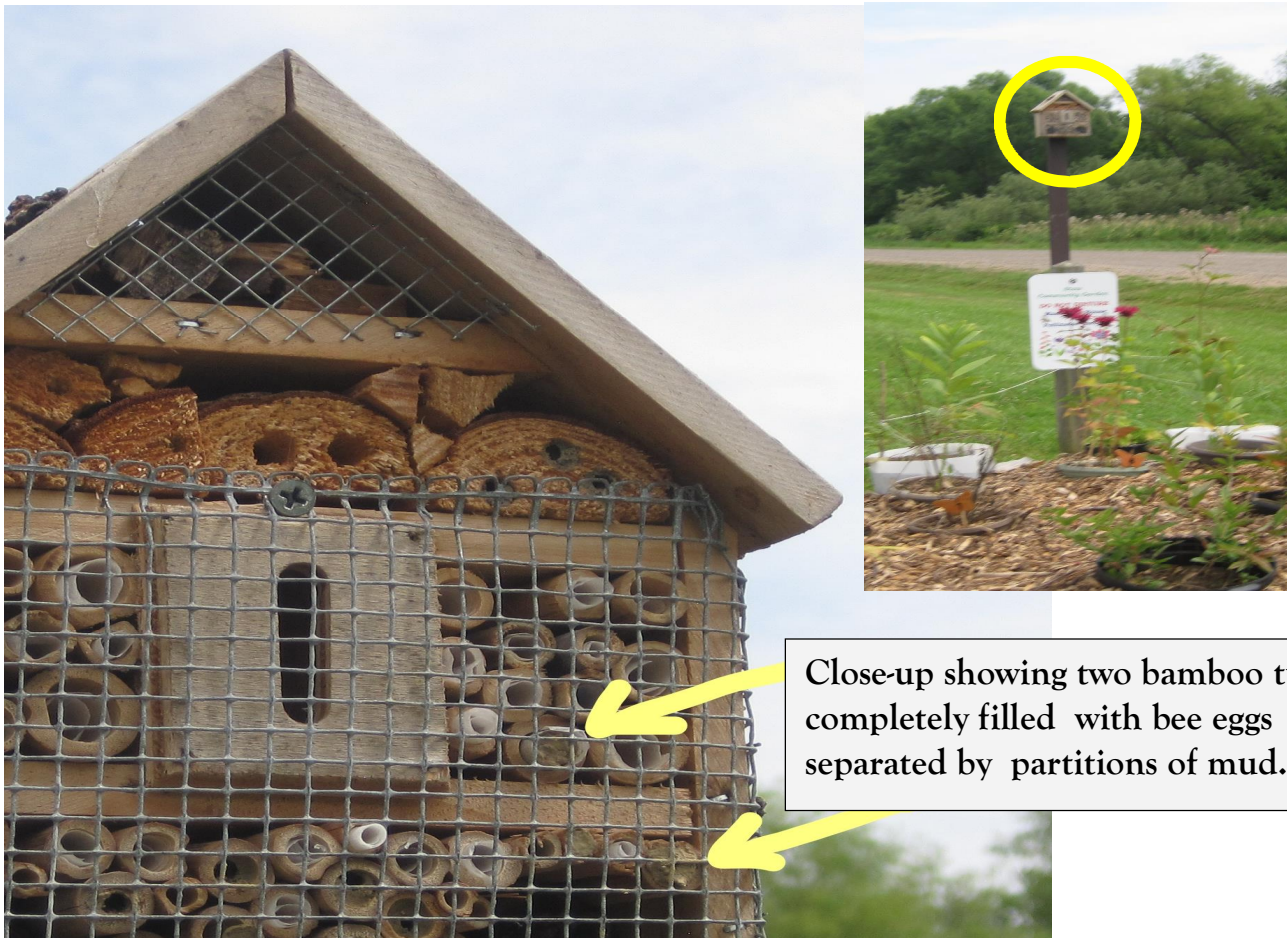
What a wonderful surprise to discover that some of the nesting tubes were completely filled with eggs deposited by wild mason bees (also known as solitary bees or orchard bees). The females deposit layers of mud (like a brick mason) after laying each egg until the tube is completely filled. This close up photo of our very own bee house shows some egg filled tubes.

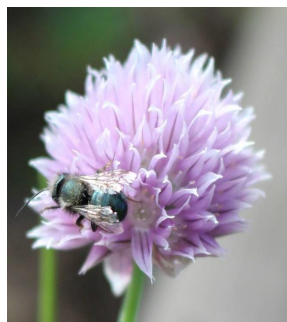
I have to admit, this didn't turn out to be "just an art project" after all. Interest in mason bees must be on the rise, bee houses twice the size of ours are selling for only \$6.99 at Aldi grocery.

Remember to complete a pollinator plant identification form and enter the drawing for a special prize. Plants in the pollinator gardens are numbered from 1-10.

Send your entries to Karen DePalo at depalok@aol.com by September 15th.

Be sure to include your name and email address.





To learn more about mason bees and the experiences others have had with them,

See: www.beediverse.com and

https://en.wikipedia.org/wiki/Osmia_lignaria

Mason Bee(*Osmia lignaria*) , male

Our master gardener, Mary Lou Rosinski recently wrote a Letter to the Editor for the Stow Sentry. In case you missed reading it, a copy is included below.

To date no one has offered to be in charge of next year's community garden program. Its future remains uncertain.

Stow Sentry, Stow, Ohio

Sunday, July 29, 2018 • 7

Letters to the Editor

Garden club needs help with future community gardens

The Stow Community Gardens have been in existence for over 50 years. Started by a group of men from Stow, they were the Stow Men's Garden Club, part of the Gardeners of America. Years later, women were allowed to join and it became the Stow Community Garden Club.

The gardens were started on land that the city owned across from the big red barn on Stow Road, where the cemetery is today. There they remained for many years. Then the city decided it needed more cemetery space, so they moved the gardens into a back area across the creek, which was our only source of water at that time. In doing so, they installed water lines for us and at our peak years, we had over 300 gardens card for by Stow residents.

So, here we are in 2018 with perhaps 80 gardeners.

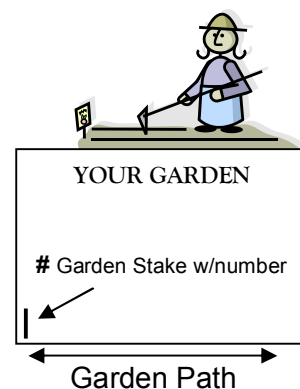
All the meetings, organizing, staking, numbering, mowing, improvements and general work is done by a handful of volunteers. We have setup rules and regulations to make it a safe place for families and all gardeners. It is a thankless job and we are all wearing down. It is time for new folks to step up to the plate. There will be no gardens next year if help is not forthcoming. The city cannot take this on due to lack of personnel and time. If you want to garden in our community garden in 2019, you need to help. Please contact Karen, our co-chair with Lynette, at Depalok@aol.com.

Mary Lou Rosinski
Stow Community Garden Club

2018 Stow Community Garden Rules & Maintenance

Planting-Start of Season: Gardens are normally ready for planting around Memorial Day. DO NOT Plant prior to gardens being staked with plot numbers. (Weather dependent)
Gardens planted before plot numbering is complete or those using unassigned plots are subject to loss of plot.

Locating Your Garden: Gardener's Name / Plot #'s are listed at Garden Shed
IT IS VERY IMPORTANT THAT YOU ARE ON
THE PATH (4' wide) TO LOCATE YOUR NUMBERED STAKE.



Your garden is to the RIGHT of your numbered stake in the lower left corner of your garden plot.

Garden Plots not planted by Fri., June 15th, 2018 will be forfeited without refund & re-assigned.

Unworked Plots: If you are on vacation or ill ask other Gardeners to water, weed and harvest for you.

Water Use: Water spigots are available at the garden. Gardeners must be at the garden site at all times when watering. - Do NOT let water run openly without need. There is an expense associated with water used in the gardens. We ask that Gardeners practice water conservation.

Garden Hoses: Hoses are not provided by the Stow Community Garden but are donated by other gardeners. Note: Gardeners using a watering can or jug have priority to the water supply. Most gardeners who use garden hoses attach a "Y" connection with a cutoff valve between the water spigot and their hose so others may use the spigot without interruption. *Hoses may not be removed from the attached water spigots - Do Not leave a hose in the aisles; after each use please recoil the hose at the spigot for the next user.*

Plastic Ground Cover, Plastic Tape, Fishing Line, Wire Fencing, Styrofoam - Are Not Permitted in garden plots. If found; these materials will be removed. These materials have broken equipment when mowing & plowing and or are not biodegradable. Recommended alternatives: Wood Chips, grass clippings, straw, paper. Fabric type ribbon, string, rope or cloth strips may be used to mark plot.

YOU must remove all materials you place in garden at the end of season. The Stow Community Garden Association & Stow Parks & Recreation Department are not responsible for materials used in the gardens.

Mesh fencing, if utilized, must be staked on the inside of garden plot so as not to sag in to the aisle.

Gardening Hours: The Stow Community Garden is located within a Stow City Park and thus gardeners must follow all City of Stow and Stow Park Ordinances. Parks including the gardens are open from *Dawn to Dusk*. You may not be in the gardens after dark.

Dogs/Pets/Alcohol/Firearms: No Dogs, Pets, Alcohol, Drugs or Firearms are permitted in the gardens. PER CITY OF STOW PARK REGULATIONS (955.02) Smoking is not permitted in the garden.

Plantings: All garden plants should be contained within your plot. No stacking of plant materials. Tall plants should be planted in the center of your plot so as not to shade a garden neighbor's plot.

Weeds / Rocks / Debris should be placed in the designated areas, not in aisles or at water spigots. Each gardener is responsible for keeping their plot weed free and keeping the adjoining aisles clear. Use only natural or organic weed/animal deterrents. Round Up or chemical weed killers are NOT permitted.

Children are welcome in the garden, but must be supervised by an Adult at ALL Times.

Pilferage/Theft: Anyone caught stealing will be put out of the Community Garden Program & Stow Police will be contacted. Gardeners should attempt to become acquainted with other gardeners using the surrounding plots and help in protecting the gardens from theft or vandalism. If you are suspicious of behavior please take note and contact the Stow Parks & Recreation Department.

Harvest: Gardeners should pick their produce when ready, thereby avoiding tempting others. Only registered gardeners or their designee are permitted to harvest their garden plot.

End of Season: All Produce must be harvested from your plot by: Friday, September 28, 2018
You are required to remove All stakes, string, wire cages, etc. off your plot by this date.

Please **Do Not Remove the Plot # Stakes** that were installed by the Community Garden Association
The Stow Community Garden Planning Committee can amend the rules for the benefit of the Program.

In Registering for a garden plot you agree to abide by the Stow Community Garden Rules / Regulations.
Stow Parks & Recreation Department 330-689-5100

Stow Community Garden: Contact Information 2018

Stow Parks & Recreation Department
3760 Darrow Road (City Hall)
Stow, OH 44224
Phone: 330-689-5100

Website: [http://stowohio.org/funinstow/
community-garden-program/](http://stowohio.org/funinstow/community-garden-program/)

Stow Community Garden
Stow Parks & Recreation Contact:
Kathy McConnell - Recreation Supervisor
kmccConnell@stow.oh.us

Stow Community Garden Association
Karen DePalo - Chairperson Email: depalok@aol.com
Lynette Holland - Chairperson

Garden Association Committee Members:

Joe Antonucci
Donna Campana
Rick Hertle
Genice Robinson
James Robinson
Mary Lou Rosinski
Becky Umbach Community Garden Newsletter Coordinator Email: ruohio@aol.com



We are fortunate to have some very inquisitive gardeners. Many of them have yet to celebrate a double digit birthday. They have agreed to interview some of our more experienced gardeners and write an article for the *Manure Spreader*. Take a break from your weeding to share with them.



It's no secret. Most of the gardens are doing exceptionally well this year. A donation area is available outside the garden shed for sharing your extras with Open M's Food Pantry in Akron. Fresh produce can get from your garden to their table in good condition within 2-3 days.

Use the coolers on the table by the garden shed for surplus veggies.

